



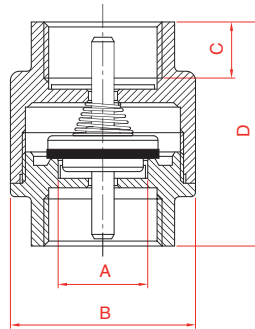
# 301 new



Valvola di ritegno con otturatore in ottone.  
Check valve with brass disk.



Finiture disponibili  
Available finishing

 GIALLO  
YELLOW



Ø	mm					
	A	B	C	D		
1/2"G	15	31	11	45	X	Pezzi sfusi Loose pieces
3/4"G	20	39	11	50	X	Pezzi sfusi Loose pieces
1"G	25	47	14	58	X	Pezzi sfusi Loose pieces
1"1/4G	32	56	17	64	X	Pezzi sfusi Loose pieces
1"1/2G	40	66	15	69	X	Pezzi sfusi Loose pieces
2"G	50	83	17	77	X	Pezzi sfusi Loose pieces
2"1/2G	65	107	17	87	X	Pezzi sfusi Loose pieces
3"G	80	109	21	102	X	Pezzi sfusi Loose pieces
4"G	100	140	21	112	X	Pezzi sfusi Loose pieces

### Informazioni tecniche

- Pressione massima d'esercizio consigliata  
**1/2"G - 1"G 12 bar**  
**1"1/4G - 2"G 10 bar**  
**2"1/2G - 4"G 8 bar**
- Temperatura massima di utilizzo **100°C**.
- Materiali: **CW617N UNI EN 12165 - CW614N UNI EN 12164 - AISI 302 - NBR.**

### Technical informations

- *Maximum recommended working pressure*  
**1/2"G - 1"G 12 bar**  
**1"1/4G - 2"G 10 bar**  
**2"1/2G - 4"G 8 bar**
- *Maximum using temperature* **100°C**.
- *Materials:* **CW617N UNI EN 12165 - CW614N UNI EN 12164 - AISI 302 - NBR.**

